



FROM CONCEPTS TO DONE!

PROJECT:

EXCLUSIVELY AT



BOOT BENCH

With this plan we outline the steps needed to build your own boot bench with Cardell® Concepts cabinetry and products from Menards. Our bench will be built for a 37" wide area. The width of your project will be based on the measurements of your area.

PREPARATION:

Prepare your area by removing obstacles located on the floor and walls that would hinder the construction of the boot bench. You may want to consider removing any baseboard and shoe molding from where the boot bench will be installed, replacing it once the project is completed.

ORDER ONLINE:
USE MENARDS
WE PULL – PICK UP
FOR THIS PROJECT



For this project we have selected the in-stock Cardell Concepts Lanston White cabinetry. The following additional door styles and finishes are available but may need to be special ordered.



Lanston
White Foil



Lanston
Grey Foil



Lanston
Gunstock Foil



Arbon
Rustic Hickory



Dobson
Mirage



Mason
Twilight

PROJECT:

BOOT BENCH

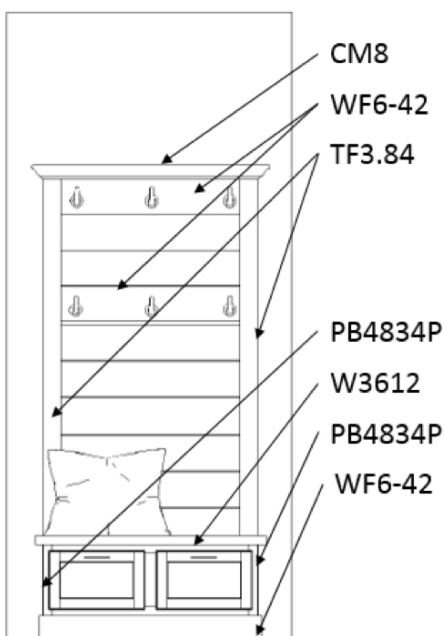
**ORDER ONLINE:
USE MENARDS
WE PULL — PICK UP
FOR THIS PROJECT**

MATERIALS NEEDED:

The following items can be purchased online at Menards.com.

SIMPLY USE THIS LINK, and all of the following items are already placed in your cart. Just review the items, their quantity and add to cart. After you checkout, your order will then be assembled and ready for you to pick up using Menards 'We Pull – Pick Up' service. Just head to the order pick up area in the lumberyard and follow the signs.

- 1- Cardell® Cabinetry Concepts Wall Cabinet W3612 (4846988)
- 1- Cardell® Cabinetry Concepts End Panel PB4834 (4847036)
- 2- Cardell® Cabinetry Concepts Tall Filler TF3-84 (4847032)
- 4- Cardell® Cabinetry Concepts Wall Filler WF6-42 (4847030)
- 1- Cardell® Cabinetry Concepts Crown Molding CM8 (4847035)
- 1- Varathane White Wood Fill Stick (5553914)
- 1- Butcher Block Countertop 25" x 48" x 1 1/2" (4857016)
- 1- Varathane Fast Dry Stain Carbon Gray (5552956)
- 1- Varathane Satin Oil-Based Interior Polyurethane (5553361)
- 3- Aspect Wood Peel and Stick Tile in Weathered Barn (5175994)
- 1- 2 x 6 x 104-5/8" Pre-Cut Stud Lumber (1021334)
- 6- Keeler Modern Collection Coat Hook (2200001)
- 2- Hickory Hardware Bridges Collection Pull (4880232)



TOOLS NEEDED TO COMPLETE THE PROJECT:

- Measuring tape
- Hammer
- Nails (common & finish)
- Screwdriver (slotted & Phillips)
- Saw (miter saw, table saw or circular saw)
- Brushes (stain & polyurethane)
- Shims

HOW-TO PROCESS:

1. Trim butcher block top to 37 in. long and 13 in. deep.
2. Stain butcher block with Varathane Fast Dry Stain Carbon
3. Gray and seal with Varathane Satin Oil-Based Interior Polyurethane following manufacturer's directions
4. Create a platform for the cabinet to sit on. Use 2 x 6 material to create a box that is the same size as the cabinet—for this design, 12 in. x 36 in.
5. Attach the cabinet to platform created in step 3.
6. Install bench cabinet assembly in place, being sure to
7. Secure the cabinet to studs in wall. Use shims to level cabinet if necessary.
8. Cut the panel backers to fit on ends of cabinet behind frame. Panel should extend from top of cabinet to floor, covering the side of the cabinet and platform. Attach paneling with brad nails.
9. Attach Wall Filler WF6-42 material to base of cabinet-platform assembly, mitering the corners and attaching the filler (as baseboard) with brad nails. Width of filler may need to be trimmed to allow for door clearance.
10. Attach finished butcher block top to bench cabinet assembly.
11. Use Tall Fillers TF3-84 to create vertical sides of back panel frame and Wall Filler WF6-42 to create top horizontal rail. Attach back panel frame to wall using finish nails. Additional horizontal pieces can be used to create multiple rows of hooks — the example uses two.
12. Within back panel frame, install Aspect Wood Peel and Stick Tile following manufacturer's directions.
13. Finish the top of the back panel frame with crown molding. With brad nails, attach the molding to the front and sides of the top wall filler using a miter joint at the corners.
14. Fill nail holes on frame, crown molding, base trim and side panel using Varathane White Wood Fill Stick. Follow manufacturer's direction for application.
15. Attach hooks to horizontal rows of back panel frame.
16. Attach cabinet hardware to doors of bench cabinet.