

Getting accurate measurements of your existing space is a relatively simple task, but it's an important step in making sure your designer can create the new kitchen of your dreams. Follow these steps and sketch your measurements on the next page to get your kitchen started on the right track.

STEP 1: Sketch an outline of your floor plan and take pictures.

- Use the grid on the next page to make it easy to draw straight lines. Label each wall of your space with a letter in your drawing. Measure and write down the full width of each wall from corner to corner.
- Take pictures to share with your designer. Overall pictures of each wall are most important, but also take pictures of other elements you are measuring throughout the process.

STEP 2: Add windows, doorways and other obstructions.

- Measure the width of each door and window, including the frame/molding in your measurement.
- Note the height of each door and window (again, including the frame/molding). For windows, also note the distance from the floor up to the bottom of the window.

STEP 3: Mark appliance connections.

- Measure from the center of each appliance to the nearest wall.
- If you're planning to keep any of your current appliances, measure their height, width and depth.
- If you're planning to purchase new appliances, provide the manufacturer and model information to your designer to ensure that your new cabinet layout will accommodate them.

STEP 4: Mark plumbing drain and supply lines.

- Measure plumbing locations to the nearest wall.
- Indicate whether the sink drain goes into the floor or the wall.
- If you have a gas range, note the location of the gas supply line, or measure from the centerline of the range if the supply line is not visible.

STEP 5: Mark electrical outlets and switches.

- Measure the location of electrical outlets and switches from the centerline of the outlet or switch to the nearest wall.

STEP 6: Note the ceiling height and soffit dimensions (if applicable).

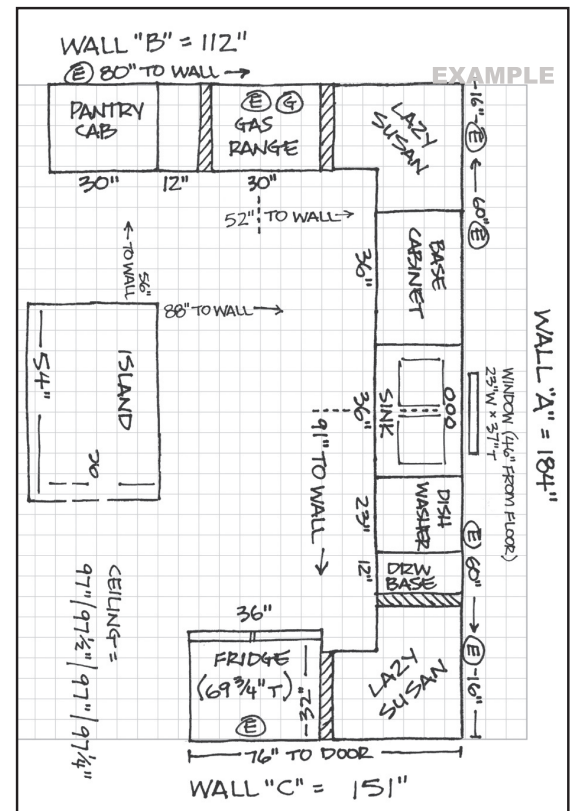
- Measure the ceiling height in 2-4 locations throughout the room.
- A soffit is the area where a ceiling extends down to meet the top of your cabinets. If you have soffits, measure their height and width.

STEP 7: Double check!

- To double check your measurements, make sure that the measurements of the individual elements in your drawing add up to the total dimension of each wall.

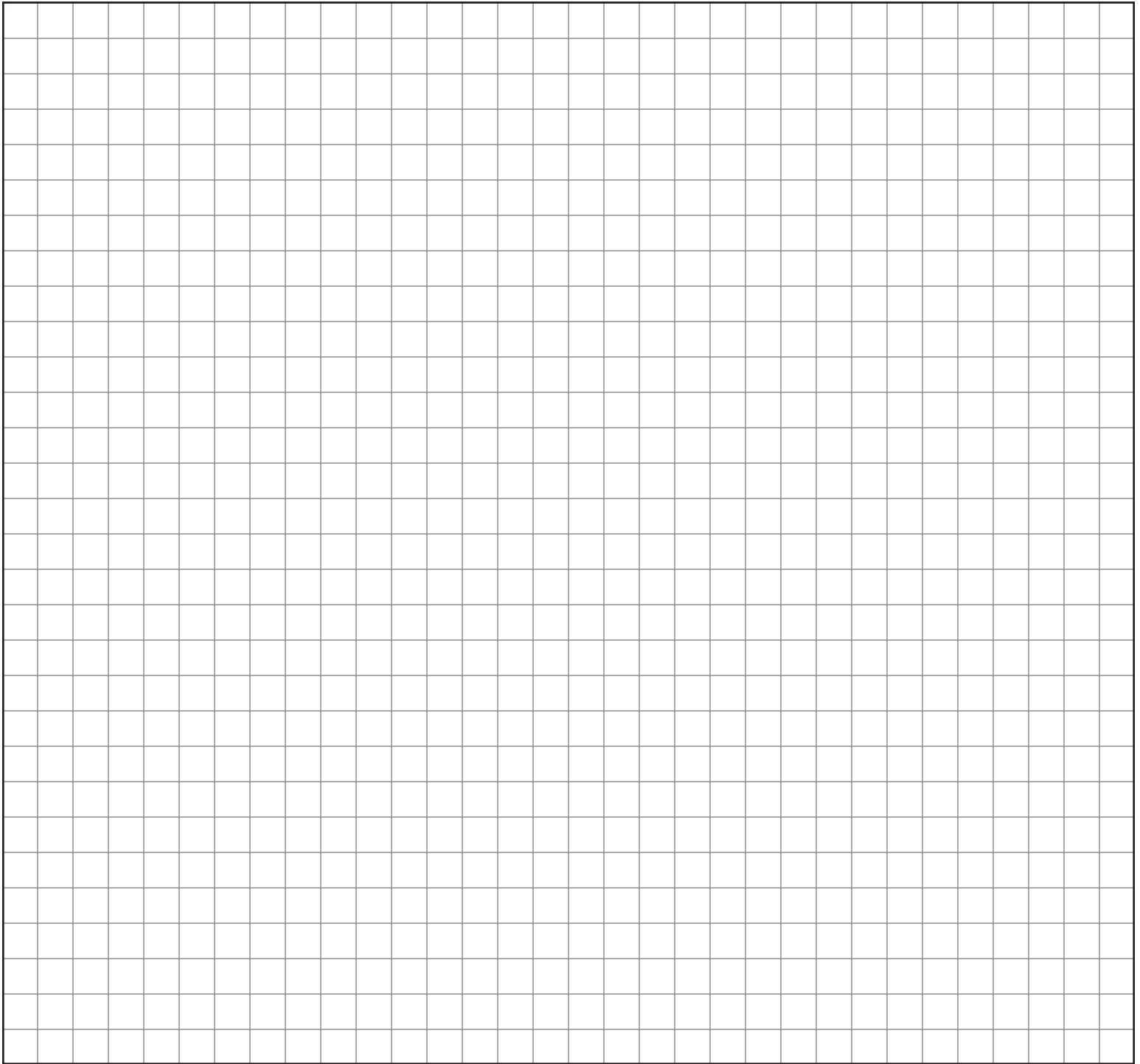
One additional consideration: If you're not planning to replace your flooring, measure the footprint of your existing lower cabinets so that your designer can ensure the same areas are covered with your new cabinetry.

THAT'S IT! Now you're ready to begin the exciting part! Send your sketch with measurements and photos to your designer so they can fully understand your current space, and begin to transform it into something you're going to love.



Customer name: _____

Customer contact info: _____



Appliances:
(Part numbers or dimensions: height/width/depth)

1: _____
2: _____
3: _____
4: _____

Ceiling Height
(measure 2-4 locations)

1: _____
2: _____
3: _____
4: _____

